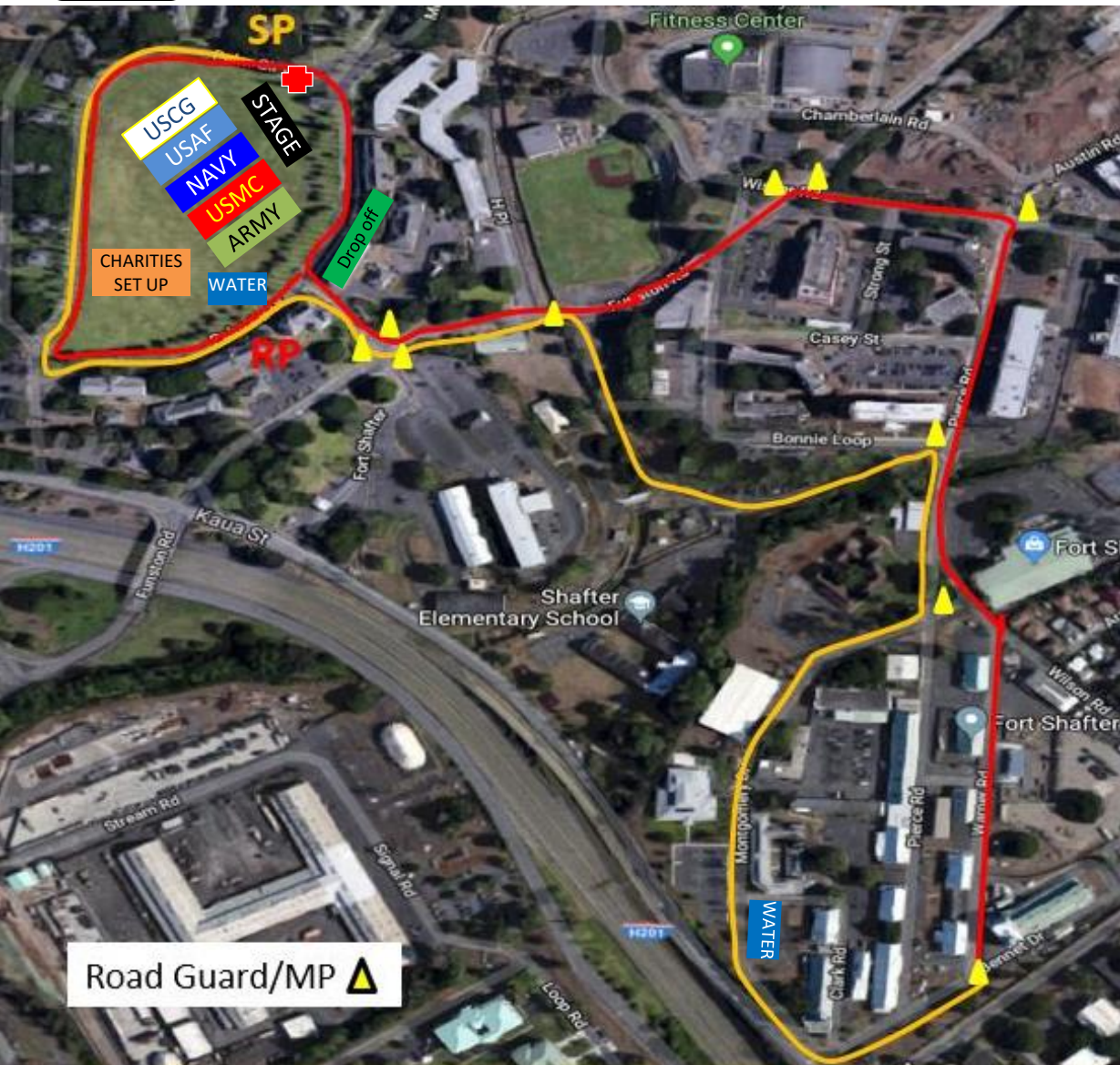




U.S. ARMY

PACIFIC

Pacific Theater CFC Kick-Off Event



Situation: USARPAC conducts a formalized Kick-Off event to start the CFC Campaign season: Fun Run/Walk on Fort Shafter.

Mission: USARPAC CONDUCTS a Combined Federal Campaign Kick-Off event on 040600WOCT19 on Palm Circle at Fort Shafter to observe the start of the 2019 CFC in the Hawaii-Pacific Region.

Execution/Concept: Service Members and their Families are invited to participate in a 2-Mile Fun Run/Walk Race around historic Fort Shafter. The event begins with Reveille followed by opening remarks from the Campaign Chairman, MG Timothy McKeithen. Execute the 2 mile race with those racing up front and runners/walkers following. After the race, medals will be presented to the top 3 Male and Female runners and any closing remarks will be presented by the Chairman.

- Timeline:**
- 0530 – Units begin to form up
 - 0630 – Reveille / National Anthem (25ID)
 - 0635 – Chairman Opening Remarks
 - 0645 – Begin Run
 - 0730 – Run Complete
 - 0740 – Chairman Awards Top 3 Male and Female Runners
 - 0750 – Closing Remarks
 - 0800 – Charities on site until 1000

Uniform: Service Members: Service Summer PFU
Family / Civilians: Appropriate athletic attire

- Set-up:**
- Services in formation facing the Flagpole
 - Mass formation by Service
 - US, HI, Service flags up front on stage
 - Medic station – North side of Flagpole
 - Sound provided by USARPAC G6
 - Road Guards at intersections to guide race route
 - Charities on field for end of race engagement
 - Water stations at Palm Circle and mid-point
 - Bus drop-off at T-117, Parking at Hale Ikena



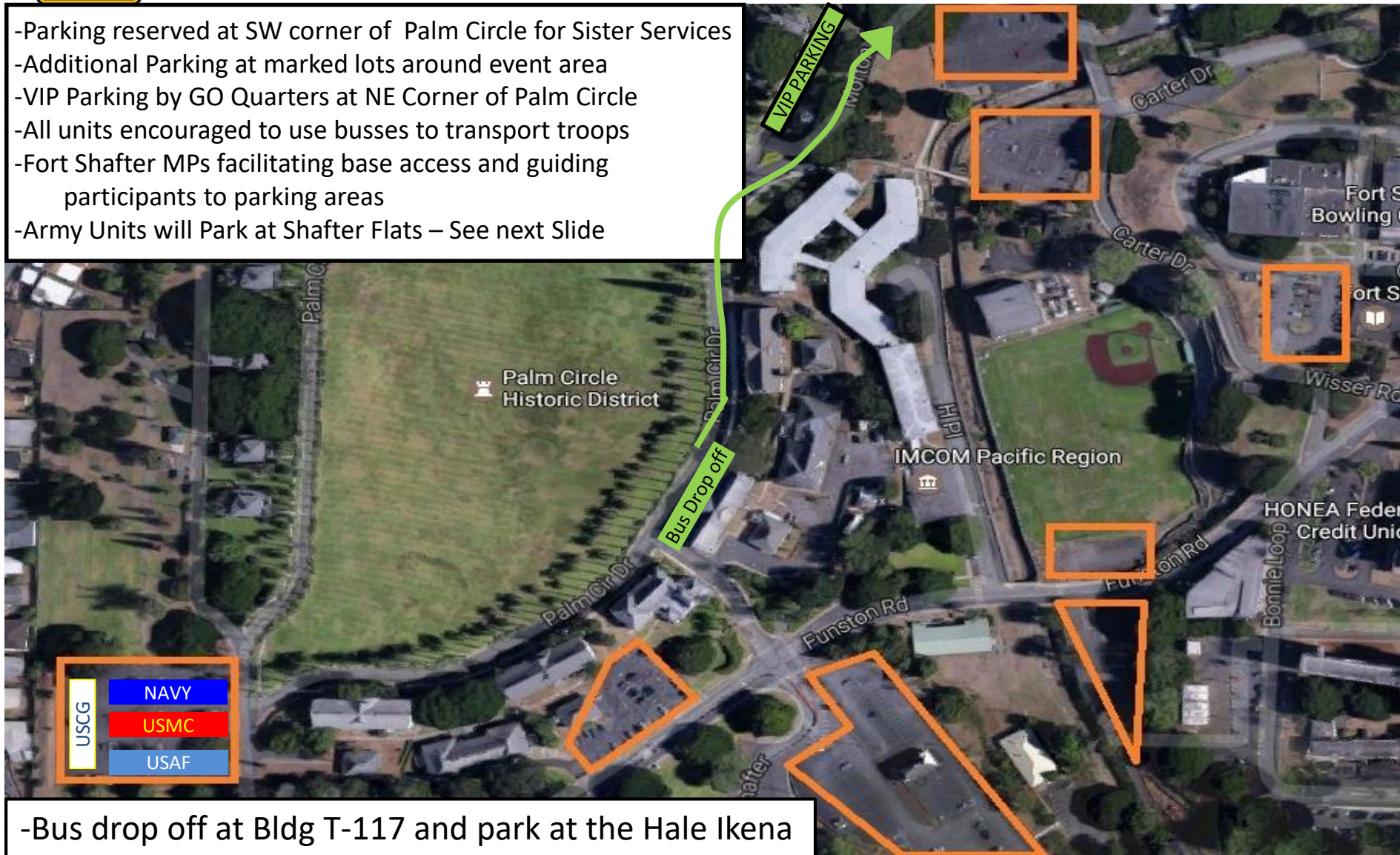
U.S. ARMY

PACIFIC

Parking



- Parking reserved at SW corner of Palm Circle for Sister Services
- Additional Parking at marked lots around event area
- VIP Parking by GO Quarters at NE Corner of Palm Circle
- All units encouraged to use busses to transport troops
- Fort Shafter MPs facilitating base access and guiding participants to parking areas
- Army Units will Park at Shafter Flats – See next Slide



USCG	NAVY
	USMC
	USAF

-Bus drop off at Bldg T-117 and park at the Hale Ikena



Parking for Army Personnel



To ensure sufficient parking for all attendees, US Army Personnel are directed to park at Shafter Flats, a small installation across HWY 201 from Fort Shafter.

Buses will be available to transport personnel from Shafter Flats to Palm Circle for the event.

It is a short distance for any who choose to walk. Just remember to take your ID Card for access.